



*audio for life*

**In-wall speakers**  
**In-ceiling speakers**  
**All weather Multi-box speakers**



## IN-CEILING SPEAKERS



**IC 611**



**IW 125i**



**NEW!**

**IC 624**



**IC 426**



**IC 428**

Using the DLS coaxial technology we have been able to design a very good speaker at a surprisingly affordable price. With the good off-axis sound it's perfect to place where you simply want to listen to quality sound, but you are not currently experiencing it. Let's say when you're entertaining guests on your terrace, taking a shower, or cooking dinner. That's where they do their job best, in any public space – a café, a shop or an office.

### MORE FACTS:

Model	IC611	IW125i	IC426	IC428	IC624
Size / type	6,5" / 2-way coaxial	5,25" / 2-way coaxial	6,5" / 2-way coaxial	8" / 2-way coaxial	6,5" / 2-way coaxial
Finish	White	White	White	White	White grille
Rec. amplifier	20 - 90 W	20 - 100 W	20 - 90 W	20 - 120 W	20 - 90 W
Frequency response	50 Hz - 18 kHz	60 Hz - 18 kHz	50 Hz - 20 kHz	42 - 20 kHz	50 - 20 kHz
Impedance	4 ohm	4 ohm	4 ohm	4 ohm	4 ohm
Outer diameter	212 mm / 8,35"	204 mm / 8,03"	210 mm / 8,3"	255 mm / 10"	234 mm / 9,21"
Installation depth	80 mm / 3,15"	60 mm / 2,36"	70 mm / 2,76"	90 mm / 3,54"	92 mm / 3,62"
Cut out dimension	197 mm / 7,75"	166 mm / 6,53"	192 mm / 7,56"	238 mm / 9,37"	205 mm / 8,07"
Tweeter	2x13 mm mylar	16 mm mylar	20 mm soft dome	25 mm soft dome	28 mm soft dome

## IN-CEILING / IN-WALL



**IWX 6.2**

The **IWX 6.2** is a unique speaker. To improve the sound we have mounted both the bass driver and the tweeter in a wooden baffle. A textile front gives a good look!

### MORE FACTS:

Model	IWX6.2
Size / type	6,5" / 2-way
Finish	White, textile grille
Rec. amplifier	20 - 120 W
Frequency response	45 Hz - 25 kHz
Impedance	4 ohm
Outer diameter	335 x 255 mm
Installation depth	70 mm / 2,76"
Cut out dimension	284 x 204 mm
Tweeter	28 mm soft dome

## IN-CEILING - SINGLE STEREO



**IC 236**



**IC 636**

DLS **IC 236** or **IC 636** for roof mount. Two speakers in one!

Connect both stereo channels to a single speaker. The bass driver have dual voice coils and two separate angled tweeters for best stereo image. A speaker in the classical round style. Can be used in most environments. Perfect as extra speaker in small areas like kitchen, bath rooms or small rooms where two separate speaker are difficult to install.

### MORE FACTS:

Model	IC236	IC636
Size / type	6,5" / 2-way coaxial	6,5" / 2-way coaxial
Finish	White	White
Rec. amplifier	20 - 100 W	20 - 120 W
Frequency response	50 Hz - 18 kHz	50 Hz - 18 kHz
Impedance	2 x 4 ohm	2 x 4 ohm
Outer diameter	228 mm / 8,98"	210 mm / 8,3"
Installation depth	75 mm / 3"	82 mm / 3,23"
Cut out dimension	192 mm / 7,56"	192 mm / 7,56"
Tweeter	2 x 16 mm mylar	2 x 20 mm soft dome

# ALL WEATHER MULTI-BOX SPEAKERS

Enjoy your favorite music everywhere! DLS all weather speaker boxes can be used wherever you want, on your terrace, by the pool side or in the boat. They are also perfect for shopping malls, coffee shops or restaurants, indoors or outdoors. All models are extremely well-sounding; you will be surprised how well they play all kinds of music.

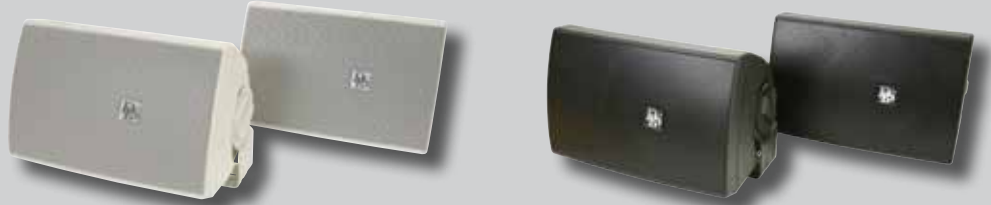
## MORE FACTS:

### Model

Speaker type  
Impedance  
Size of bass driver  
Tweeter  
Nom. power (RMS)  
Maximum power  
Frequency range  
Sensitivity  
Temp. range  
Outer size WxHxD  
Weight

### MB5

2-way bass reflex  
4 ohm  
5,25" ( 13 cm)  
20 mm /0,8" soft dome  
80 Watts RMS  
160 Watts  
70 Hz-20 kHz  
90 dB / W / m  
-20 - +85 degrees C.  
235 x155 x160 mm  
2,5 kg / 5,4 lbs



## MORE FACTS:

### Model

Speaker type  
Impedance  
Size of bass driver  
Tweeter  
Nom. power (RMS)  
Maximum power  
Frequency range  
Sensitivity  
Temp. range  
Outer size WxHxD  
Weight

### MBU5

2-way bass reflex  
4 ohm  
5,25" ( 13 cm)  
28 mm /1,1" soft dome  
100 Watts RMS  
200 Watts  
60 Hz-20 kHz  
91 dB / W / m  
-20 - +85 degrees C.  
300 x190 x165 mm  
4 kg / 9 lbs



## MORE FACTS:

### Model

Speaker type  
Impedance  
Size of bass driver  
Tweeter  
Nom. power (RMS)  
Maximum power  
Frequency range  
Sensitivity  
Temp. range  
Outer size WxHxD  
Weight

### MB6

2-way bass reflex  
4 ohm  
6,5" ( 16,5 cm)  
25 mm / 1" soft dome  
110 Watts RMS  
220 Watts  
55 Hz-20 kHz  
90 dB / W / m  
-20 - +85 degrees C.  
285 x170 x178 mm  
3,3 kg / 7,3 lbs



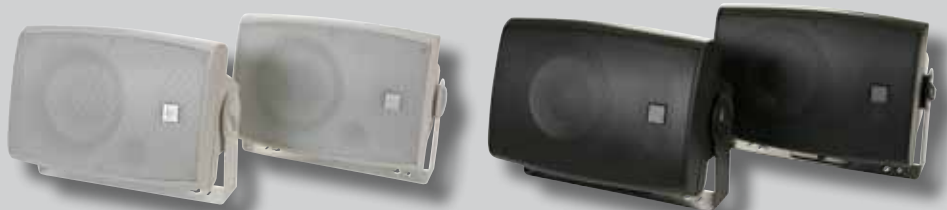
## MORE FACTS:

### Model

Speaker type  
Impedance  
Size of bass driver  
Tweeter  
Nom. power (RMS)  
Maximum power  
Frequency range  
Sensitivity  
Temp. range  
Outer size WxHxD  
Weight

### MBU6

2-way bass reflex  
4 ohm  
6,5" ( 16,5 cm)  
28 mm /1,1" soft dome  
150 Watts RMS  
300 Watts  
45 Hz-20 kHz  
91 dB / W / m  
-20 - +85 degrees C.  
310 x190 x220 mm  
4,3 kg / 9,5 lbs





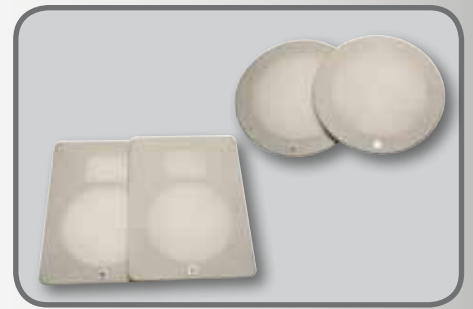
# ACCESSORIES



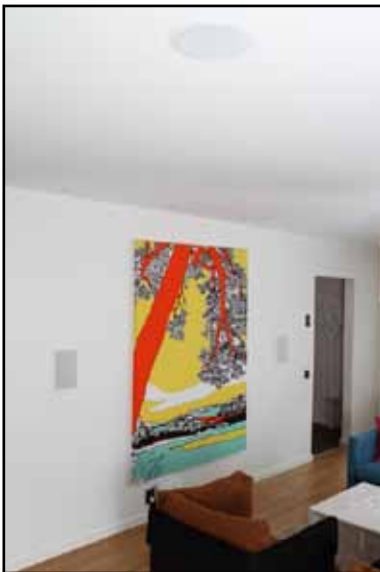
Some models of In-ceiling speakers can also be used in line systems. A 100Volt line transformer can be mounted on the frames of IW126i, IC 426 and IC 428



Professional Hole saws in various sizes for all DLS In-ceiling speakers



Change the metal mesh grilles to new in textile. This will improve the look of the installation, it will give a more exclusive look! The colour is "off-white" and can be cleaned if it becomes dirty.



DLS is the link between you and a music experience far beyond the normal. Since DLS was established in 1979 we have developed and produced speakers for music lovers. Over the years, we have won numerous awards for our speaker systems. Fundamental to our success is a passion for music reproduction shared by all the directors of the company. This provides the drive to develop the perfect speaker system.



FOR MORE INFORMATION,  
PLEASE CONTACT US AT  
INFO@DLS.SE OR VISIT WWW.DLS.SE